

Specification sheet LX2283

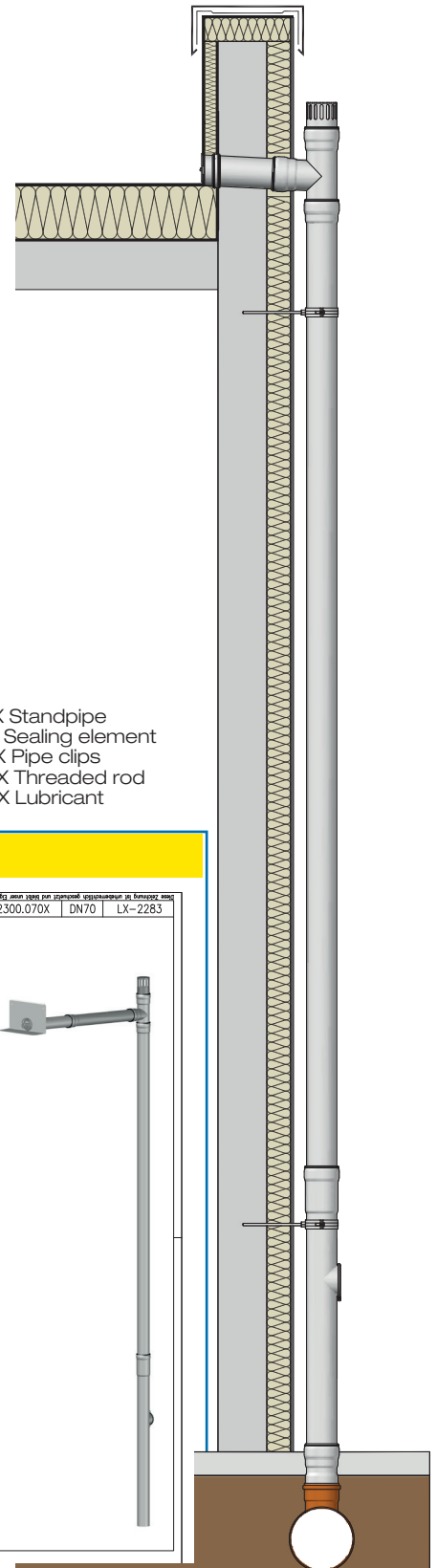
Parapet drainage LORO-X Light Parapet drain with bonding flange

Main drainage	
Gravity flow	
Silent	
Discharge rate:	0,52 l/s
Water height:	35 mm
Roof penetration:	0 mm
Diameter:	DN 70
LX-Number:	LX2283
Weir height:	-
Drain:	ventilated
Downpipe:	ventilated
Downpipe height:	4.2 m
Drainage:	in ground pipe
Flange:	bonding flange

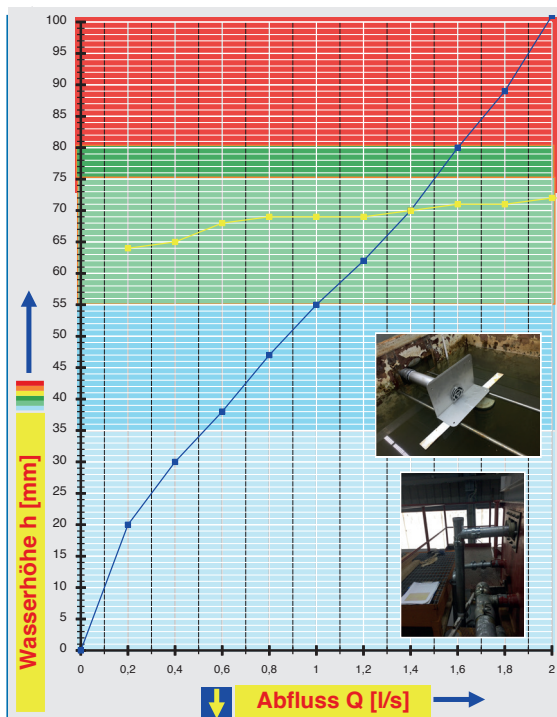
LX2283 Piece list

1 x Art.-No. 12300.070X, LORO-X Light Parapet drain
 1 x Art.-No. 01301.070X, LORO-X Pipe with one socket
 1 x Art.-No. 13217.070X, LORO-X Ventilation piece
 1 x Art.-No. 00200.CC0X, LORO-X Branch
 1 x Art.-No. 01001.070X, LORO-X Pipe with one

1 x Art.-No. 05510.070X, LORO-X Standpipe
 5 x Art.-No. 00911.070X, LORO-X Sealing element
 3 x Art.-No. 00973.070X, LORO-X Pipe clips
 3 x Art.-No. 09604.200X, LORO-X Threaded rod
 1 x Art.-No. 00986.000X, LORO-X Lubricant

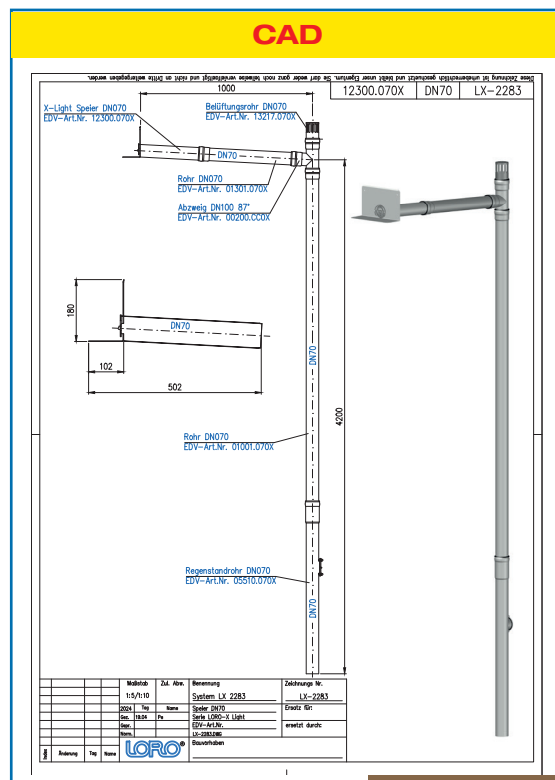


hQ - Discharge curve



System power

CAD



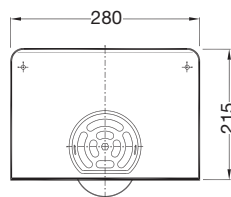
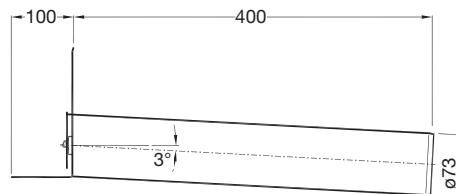
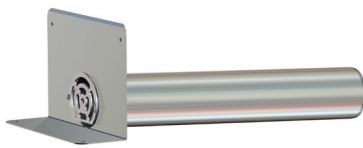
System shape

Water height	mm	15	20	25	30	35	40	45	50	55	60	65	70	75	80	85	90	95
Discharge	l/s	-	0,2	0,3	0,4	0,52	0,64	0,75	0,87	1,0	1,14	1,27	1,4	1,5	1,6	1,7	1,82	1,9
Silent																		

LORO-X Light parapet drain with bonding flange

DN 70

LX2283-20X

**Series X-Light
with bonding flange**Drain Art.-No. 12300.070X
Weight: 2,10 kg

Heat tracing: Lorowerk recommends to check all drains and pipes with regard to their frost-sensibility. Where necessary, these parts should be upgraded with heat tracing.